

LED LAMP CLUSTER

BL-CR19AR3G4

Features:

- ·Shape: Round
- ·Diameter: 19mm
- ·High visibility
- ·Emitting Color: Ultra Yellow
- ·No of Built-in 5mm LED Lamps :
- ·Ultra Red - 3pcs, green – 4pcs
- ·Waterproof Package With Hood Suitable
- ·For Outdoor and Indoor Information Boards
- ·Rohs Compliance



■ Selection Guide

Part No.	Description
BL-CR19AR3G4	19mm square Lamp cluster 3 red ,4 green, square packed

■ Description:

·Color Code & Chip characteristics: (Test Condition: IF=20mA)

Part No.	Built-in Lamp Package	Built-in Lamp Part No. BL-L	Chip		Lens Appearance	Electro-optical Data(At 20mA)			Viewing Angle 2θ1/2 (deg)
			Material/Emitted Color	Peak Wave Length λp (nm)		Vf (V)		Iv (mcd)	
						Typ	Max	Typ	
BL-CR19A R3G4	4x5x7mm 1.0" Lead Oval	563UET	AlGaInP/ Ultra Red	630	Red Tran.	2.10	2.50	750	X-X 45 Y-Y 25
		563UGT	AiGaInP Ultra Blue	574	Green Tran.	2.20	2.50	500	

Notes:

1. θ1/2 Is the angle from optical centerline where the luminous intensity is 1/2 the optical centerline value.

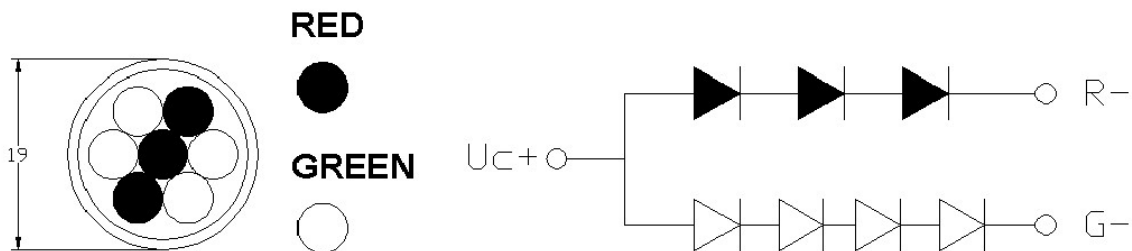
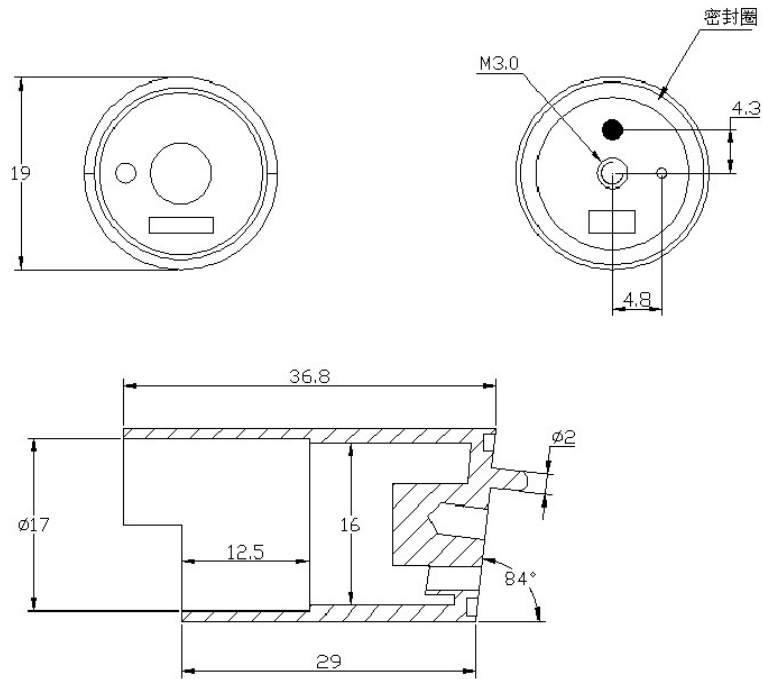
■ Absolute Maximum Rating (Each Lamp, Ta=25°C Derate above 25°C)

Characteristic	Symbol	Ultra Orang	Ultra Green		Unit
Spectral Line Half width	$\Delta\lambda$	17	30		nm
Pulse Forward Current	IFp	150	150		mA
DC Forward Current	IF	30	30		mA
Reverse Voltage	VR	5	5		V
Power Dissipature	PD	65	75		mW
Operating Temperature	Topr	-40°C-80°C			
Storage Temperature	Tstg	-40°C-85°C			
Lead Soldering Temperature		Max.260±5°C for 3 sec Max. (1.6mm from the base of the epoxy bulb)			

LED LAMP CLUSTER

BL-CR19AR3G4

■ **Package configuration & Internal circuit diagram:**



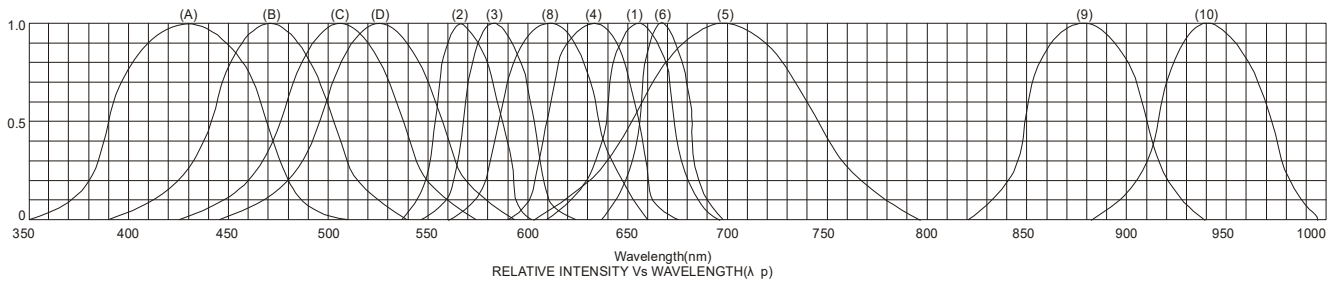
Notes:

- All dimensions are in millimeters (inches)
- Tolerance is $\pm 0.25(0.01)$ unless otherwise noted.
- Specifications are subject to change without notice.

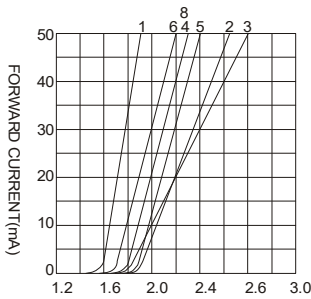
LED LAMP CLUSTER

BL-CR19AR3G4

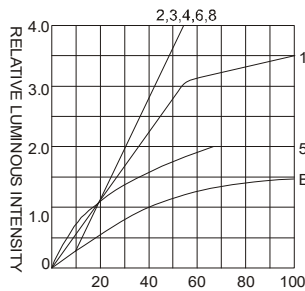
Typical electrical-optical characteristics curves:



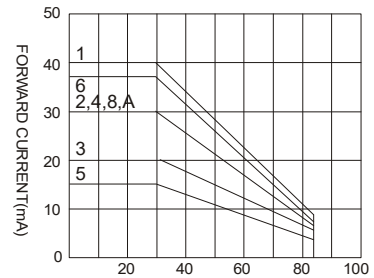
- (1) - GaAsP/GaAs 655nm/Red
- (2) - GaP 570nm/Yellow Green
- (3) - GaAsP/GaP 585nm/Yellow
- (4) - GaAsP/GaP 635nm/Orange & Hi-Eff Red
- (5) - GaP 700nm/Bright Red
- (6) - GaAlAs/GaAs 660nm/Super Red
- (8) - GaAsP/GaP 610nm/Super Red
- (9) - GaAlAs 880nm
- (10) - GaAs/GaAs & GaAlAs/GaAs 940nm
- (A) - GaN/SiC 430nm/Blue
- (B) - InGaN/SiC 470nm/Blue
- (C) - InGaN/SiC 505nm/Ultra Green
- (D) - InGaAl/SiC 525nm/Ultra Green



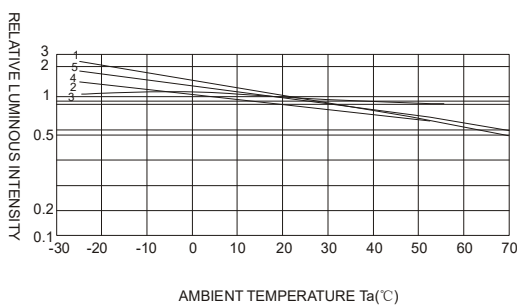
FORWARD VOLTAGE (Vf)
FORWARD CURRENT VS.
FORWARD VOLTAGE



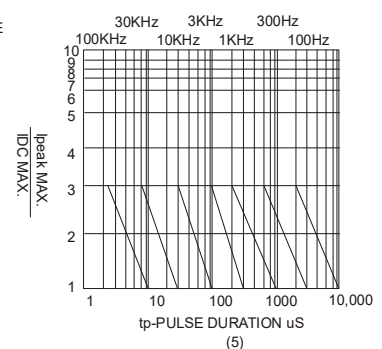
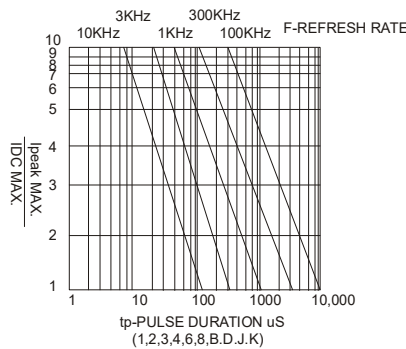
FORWARD CURRENT (mA)
RELATIVE LUMINOUS
INTENSITY VS. FORWARD
CURRENT



AMBIENT TEMPERATURE Ta(°C)
FORWARD CURRENT VS. AMBIENT
TEMPERATURE



AMBIENT TEMPERATURE Ta(°C)



NOTE:25°C free air temperature unless otherwise specified

LED LAMP CLUSTER

BL-CR19AR3G4

■ **Packing and weighting**

