

High Power LED

BL-HP20AxxxL

Features:

- 1W and 3W, 5W LEDs suitable for illumination lamps and decorative lighting
- Longer service and less luminosity loss, 50,000hours
- Different emitting colors are available
- Working current: 200-350mA, 700mA, 1050mA
- With or without heat sink are both available
- Lambertian, batwing and side emitting are all available
- Light output from 20 to 170 lumens

Applications:

- Commercial lighting
- Residential lighting
- Decorative lighting



1Watt Lambertian

Electrical-optical characteristics: (Ta=25°C) (Test Condition: IF=350mA)

1W Star with Lambertian type Part Number	Chip		Lens Type	Forward Voltage(VF) Unit:V		Flux Unit:lm @350mA		Viewing Angle 2θ1/2 (deg)
	Emitted Color	λ _p (nm) or CTT		Typ	Max	Min.	Typ.	
				Water Clear				
BL-HP20AUECL	Ultra Red	630		2.2	2.75	35	45	
BL-HP20AUYCL	Ultra Yellow	590		2.2	2.75	35	45	
BL-HP20APGCL	Ultra Pure Green	525		3.2	3.8	50	60	
BL-HP20ABGCL	Ultra Bluish Green	505		3.2	3.8	40	50	
BL-HP20AUBCL	Ultra Blue	470		3.2	3.8	10	15	
BL-HP20AUWCL	Ultra White	6000k		3.2	3.8	70	90	
BL-HP20AUW2CL	Ultra Warm White	3200k		3.2	3.8	50	70	

Absolute maximum ratings (Ta=25°C)

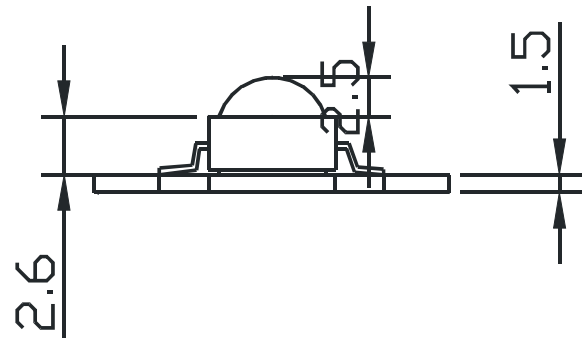
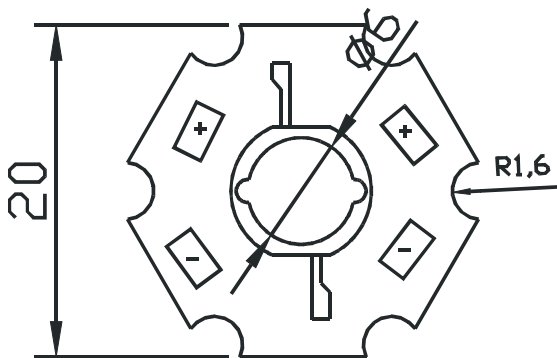
Parameter	UE	UY	BG	PG	UB	UW	Unit
Forward Current I _F	350	350	350	350	350	350	mA
LED Junction Temperature	120	120	120	120	120	120	°C
Peak Forward Current I _{PF} (Duty 1/10 @1KHZ)	500	500	500	500	500	500	mA
Operation Temperature T _{OPR}	-40 to +80						°C
Storage Temperature T _{STG}	-40 to +85						°C
Aluminum-Core Pcb Temperature	105						°C

High Power LED

BL-HP20AxxxL

■ Package configuration & Internal circuit diagram

BL-HP20A Series



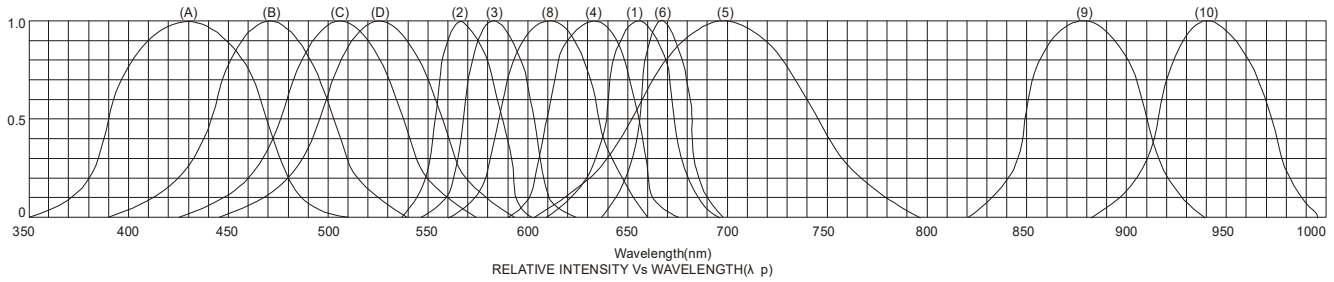
Notes:

1. All dimensions are in millimeters (inches)
2. Tolerance is $\pm 0.25(0.01)$ unless otherwise noted.
3. Specifications are subject to change without notice.

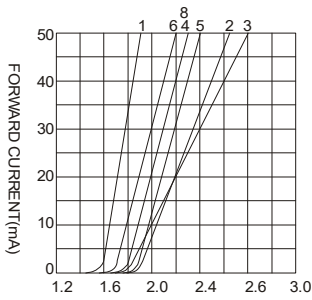
High Power LED

BL-HP20AxxxL

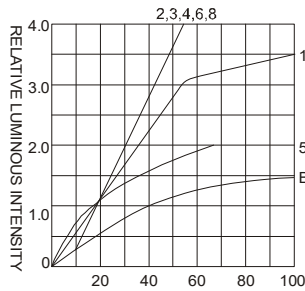
Typical electrical-optical characteristics curves:



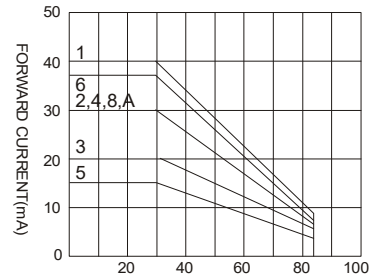
- (1) - GaAsP/GaAs 655nm/Red
- (2) - GaP 570nm/Yellow Green
- (3) - GaAsP/GaP 585nm/Yellow
- (4) - GaAsP/GaP 635nm/Orange & Hi-Eff Red
- (5) - GaP 700nm/Bright Red
- (6) - GaAlAs/GaAs 660nm/Super Red
- (8) - GaAsP/GaP 610nm/Super Red
- (9) - GaAlAs 880nm
- (10) - GaAs/GaAs & GaAlAs/GaAs 940nm
- (A) - GaN/SiC 430nm/Blue
- (B) - InGaN/SiC 470nm/Blue
- (C) - InGaN/SiC 505nm/Ultra Green
- (D) - InGaN/SiC 525nm/Ultra Green



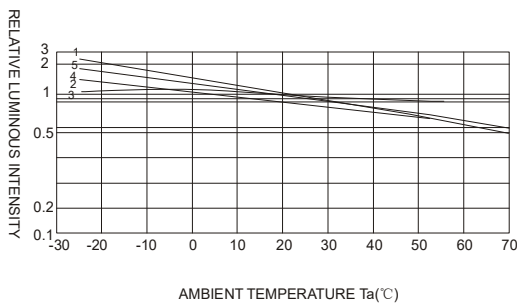
FORWARD VOLTAGE (Vf)
FORWARD CURRENT VS.
FORWARD VOLTAGE



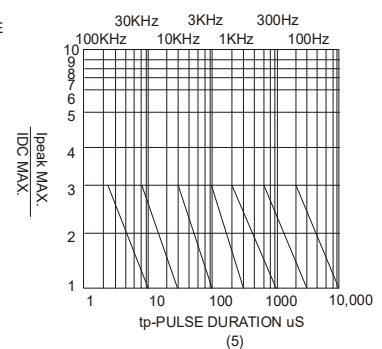
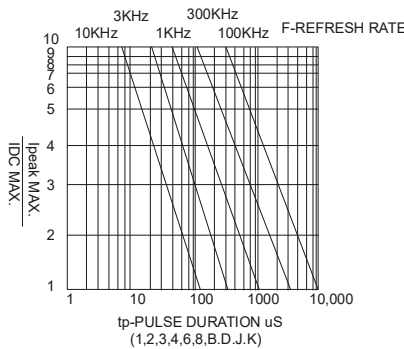
FORWARD CURRENT (mA)
RELATIVE LUMINOUS
INTENSITY VS. FORWARD
CURRENT



AMBIENT TEMPERATURE Ta(°C)
FORWARD CURRENT VS. AMBIENT
TEMPERATURE



AMBIENT TEMPERATURE Ta(°C)



NOTE:25°C free air temperature unless otherwise specified

High Power LED

BL-HP20AxxxL

■ **Packing and weighting**

