

LED LAMP CLUSTER

BL-CR19AR4

Features:

- Ø Shape: Round
- Ø Diameter: 19mm
- Ø High visibility
- Ø Emitting Color: Red
- Ø No of Built-in 5mm LED Lamps :
- Ø Ultra orange - 4pcs
- Ø Waterproof Package With Hood Suitable
- Ø For Outdoor and Indoor Information Boards
- Ø Rohs Compliance



Selection Guide

| Part No. | Description |
|------------|---|
| BL-CR19AR4 | 19mm square Lamp cluster 4 red4, square packed |

Description:

-Color Code & Chip characteristics: (Test Condition: IF=20mA)

| Part No. | Built-in Lamp Package | Built-in Lamp Part No. BL-L | Chip | | Lens Appearance | Electro-optical Data (At 20mA) | | | Viewing Angle $\theta_{1/2}$ (deg) |
|------------|------------------------------|-----------------------------|--------------------------|-----------------------------------|-----------------|--------------------------------|------|-------------|------------------------------------|
| | | | Material/Emitted Color | Peak Wave Length λ_p (nm) | | V_f (V) | | I_v (mcd) | |
| | | | | | | Typ | Max | Typ | |
| BL-CR19AR4 | 4x5x7mm 1.0" Lead Oval | 563UET | AlGaInP/ Ultra Orange | 630 | Red Tran. | 2.10 | 2.50 | 750 | X-X 45 Y-Y 25 |

Notes:

- $\theta_{1/2}$ is the angle from optical centerline where the luminous intensity is 1/2 the optical centerline value.

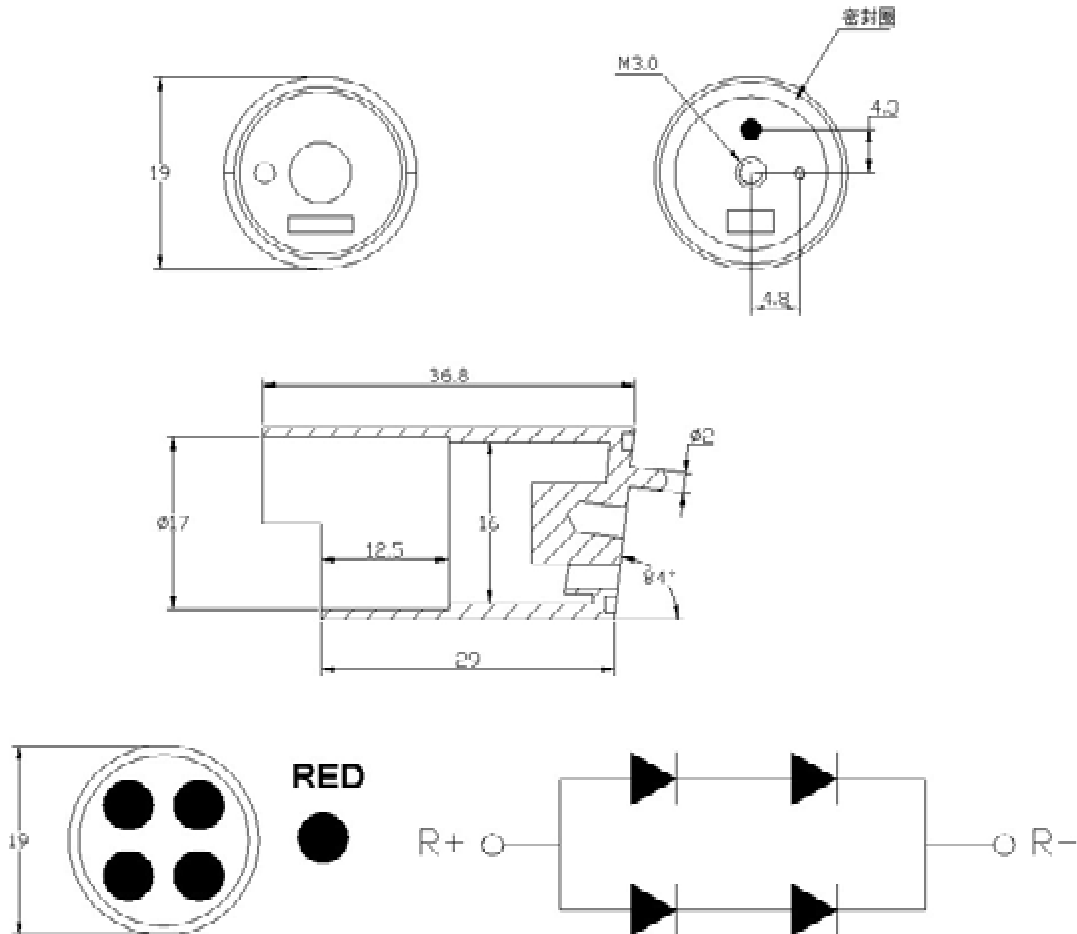
Absolute Maximum Rating (Each Lamp, $T_a=25^\circ\text{C}$ Derate above 25°C)

| Characteristic | Symbol | Ultra Orang | Ultra Green | Unit |
|----------------------------|-----------------|---|-------------|------|
| Spectral Line Half width | $\lambda_{1/2}$ | 17 | 30 | nm |
| Pulse Forward Current | IFp | 150 | 150 | mA |
| DC Forward Current | IF | 30 | 30 | mA |
| Reverse Voltage | V_R | 5 | 5 | V |
| Power Dissipature | PD | 65 | 75 | mW |
| Operating Temperature | Topr | -40°C-80°C | | |
| Storage Temperature | Tstg | -40°C-85°C | | |
| Lead Soldering Temperature | | Max.260±5°C for 3 sec Max. (1.6mm from the base of the epoxy bulb) | | |

LED LAMP CLUSTER

BL-CR19AR4

Package configuration & Internal circuit diagram:



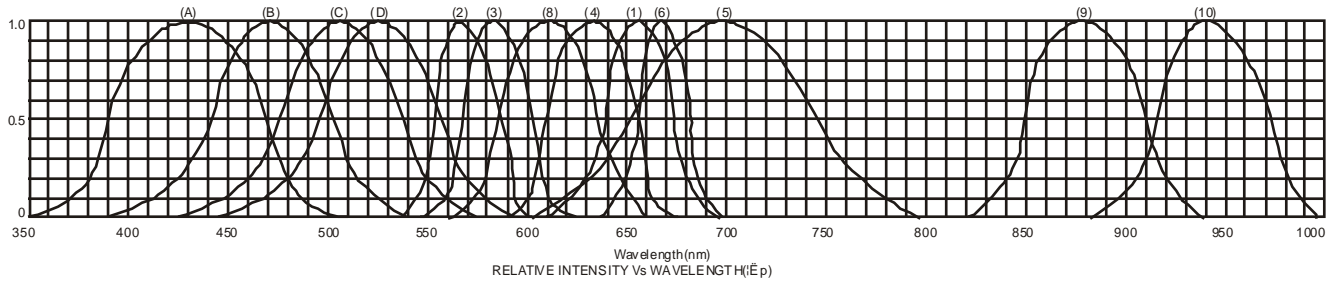
Notes:

- All dimensions are in millimeters (inches)
- Tolerance is ± 0.25 (0.01") unless otherwise noted.
- Specifications are subject to change without notice.

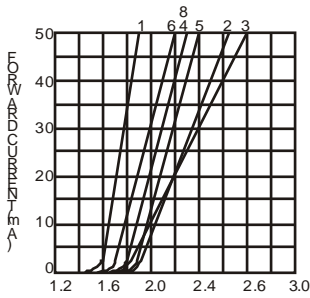
LED LAMP CLUSTER

BL-CR19AR4

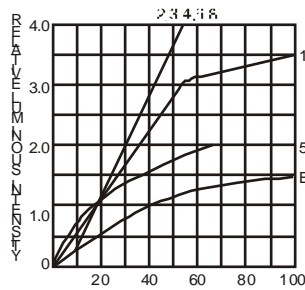
Typical electrical-optical characteristics curves:



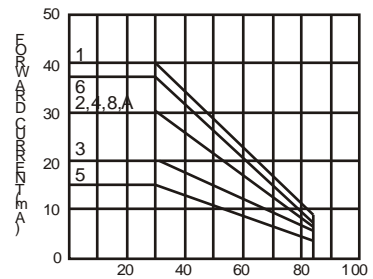
- (1) - GaAsP/GaAs 655nm/Red
- (2) - GaP 570nm/Yellow Green
- (3) - GaAsP/GaP 585nm/Yellow
- (4) - GaAsP/GaP 635nm/Orange & Hi-Eff Red
- (5) - GaP 700nm/Bright Red
- (6) - GaAlAs/GaAs 660nm/Super Red
- (8) - GaAsP/GaP 610nm/Super Red
- (9) - GaAlAs 880nm
- (10) - GaAs/GaAs & GaAlAs/GaAs 940nm
- (A) - GaN/SiC 430nm/Blue
- (B) - InGaN/SiC 470nm/Blue
- (C) - InGaN/SiC 505nm/Ultra Green
- (D) - InGaAl/SiC 525nm/Ultra Green



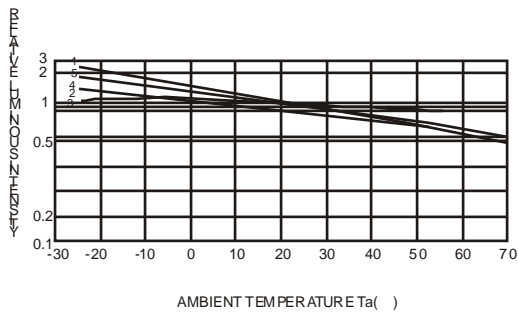
FORWARD VOLTAGE (Vf)
FORWARD CURRENT VS.
FORWARD VOLTAGE



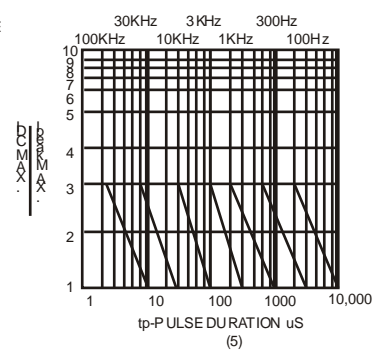
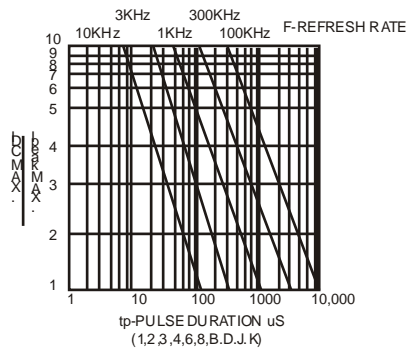
FORWARD CURRENT (mA)
RELATIVE LUMINOUS
INTENSITY VS. FORWARD
CURRENT



AMBIENT TEMPERATURE Ta(°C)
FORWARD CURRENT VS. AMBIENT
TEMPERATURE



AMBIENT TEMPERATURE Ta(°C)



NOTE:25 free air temperature unless otherwise specified

LED LAMP CLUSTER

BL-CR19AR4

Packing and weighting

